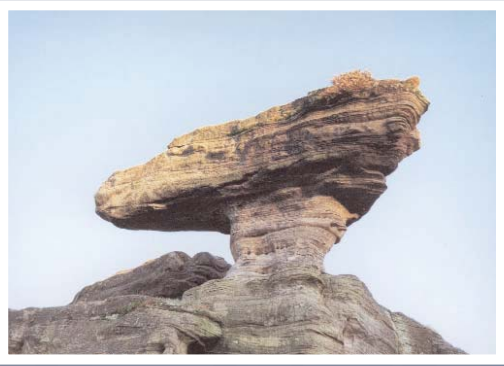


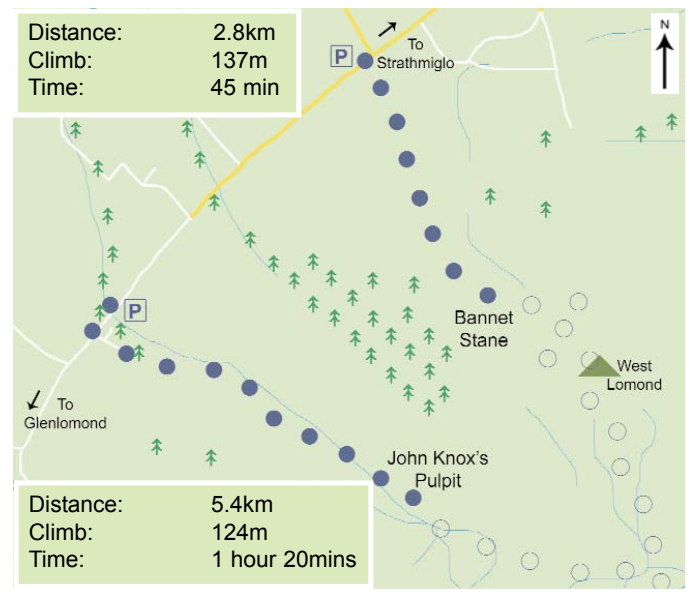
& The Bannet Stane

focus. They can be found by leaving the A911 between Kinross and Wester Balgeddie which lead into Fife. The path is on the right. You need to walk back along the road to the start of the couple of spaces a little further along on the road side.



Walking Directions: Leave the Bannet Stane parking and follow the trail which is close to the dyke. You will see the Bannet Stane appearing just as the hill starts to rise more steeply. You return by the same route.

Distance: 2.8km
Climb: 137m
Time: 45 min



Distance: 5.4km
Climb: 124m
Time: 1 hour 20mins

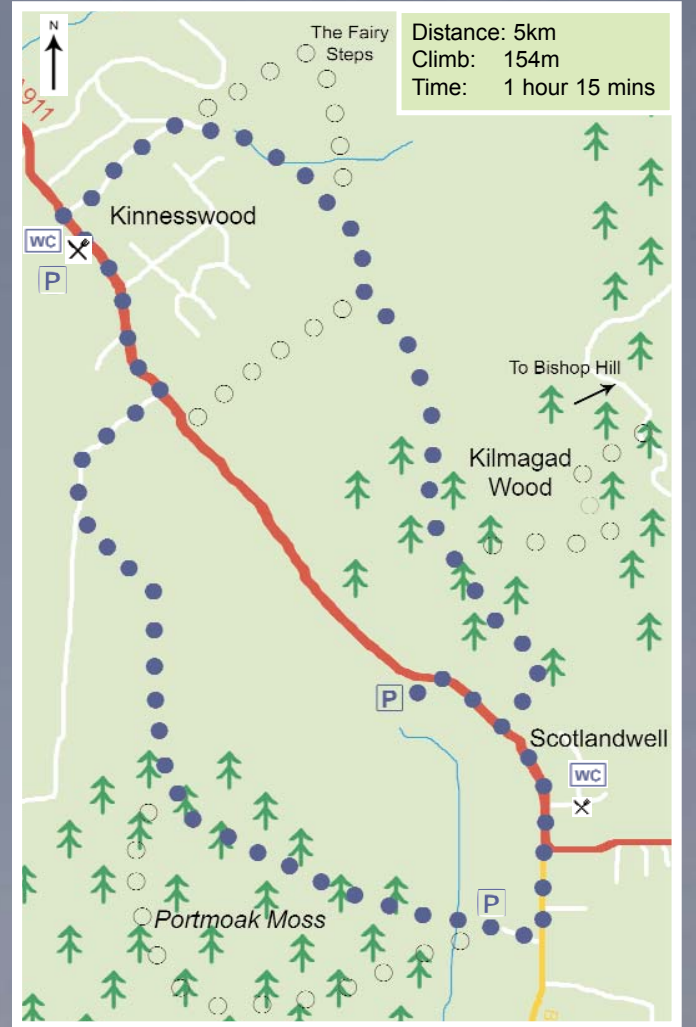
4. Michael Bruce Way and Portmoak Moss

These walks can be found along the A911 and at the southern village sign for Scotlandwell where there is parking for Portmoak Moss. The most common place to start is at Portmoak Church. There are separate leaflets which will give you more information about the historical and natural significance of these areas.

Parking: The Lomond Inn, Kinnesswood, Portmoak Church car park (NO 181 020 - not on Sunday mornings!), Portmoak Moss, Scotlandwell.



Walking Directions: The entry to the path can be found along from Portmoak Church, just beyond the northern Scotlandwell sign, on the other side of the road. Follow the sign pointing up the inset steps towards Bishops Hill. There is a steep climb until over a couple of stiles. A path runs along the top of Bishopshire Golf Course. You will reach a kissing gate where you can turn left and head down hill to the main road. Or stay on the side of the hill and proceed until you join the top edge of Kinnesswood. You can now walk down through Historic Kinnesswood to the main road. Turn left along the main busy road through the village. The Lomond Inn on the right provides refreshment as well as some stunning Loch views. To continue on the trail proceed through the end of the village and turn right down into Graham stone which is a Turf Farm. There is a footpath sign here directing you towards Portmoak Moss. There are Trails around the moss which will lead you to the parking at Portmoak Moss and back onto the main road up through Scotlandwell. The Well Inn is situated in the village for refreshment or head back to the Church car park.



Distance: 5km
Climb: 154m
Time: 1 hour 15 mins

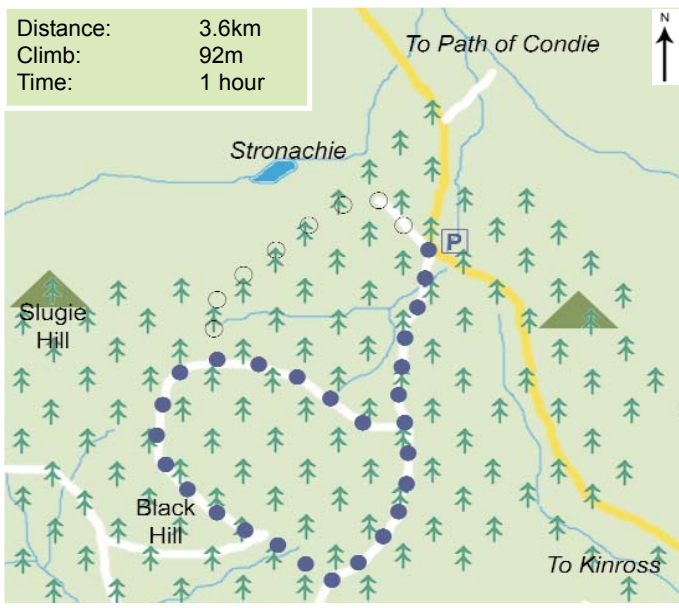
2. Stronachie & Black Hill



This short walk will take you along well used paths meandering through a large forest which opens out occasionally to some spectacular views. It can be found around 5 miles to the North of Kinross off the A91 which can be accessed from Milnathort or via Gallowhill Road from the main road through Kinross. Follow signs for Stronachie.

Parking: (NO 070 078) Room for 4 or 5 cars in large lay-by with a stile and an orange gate at the start of the walk.

If you follow the main path you will eventually come across the 18th hole on the golf course and Mary's Gate, at this point you have 2 choices turn left and it will lead you around the rest of the golf course and eventually back into Kinross, the right path takes you further around the loch. If you take the right, it will lead you along the edge of a field across a large bridge and into a flat area more commonly known as Burielgh Sands. Follow the path towards the car park then turn right across a small bridge. The trail again is very simple to follow, along this stretch you can see some beautiful views of the Loch between the trees. As you get further round the loch after a small bridge there is a left turning up through a field to Loch Leven's Larder, which is a good place to rest. If you'd rather carry on, follow the path straight on which will lead you further round the loch. There are wooded areas and a good view of St Serf's Island around this part of the loch. At Findatie there is an option to move away from trail and find refreshment in Loch End Farm along the road. Following the trail, the walk ends at Vane Farm where there are good facilities and spectacular views of the Loch.



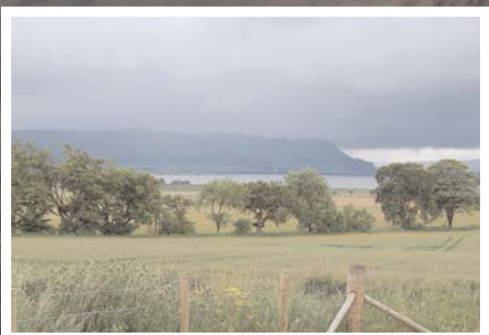
Distance: 3.6km
Climb: 92m
Time: 1 hour

Walking Directions: The Stronachie Walks are mainly defined by forestry roads. The main walk begins with a gradual incline up the main forest path from the car park, which after about 20 minutes walk becomes a V in the road. You now have a choice to go clockwise or anti-clockwise round the walk, either way you will return to the path you have just walked. If you go left (clockwise) from the V, you will remove yourself from the main road and follow a forest track. After following this for about 15 minutes you will meet a second split in the road, take the right turning which, after a few steps becomes a rough, narrow pathway. Follow this until you come across the main road again. You will be faced with a large corner in the road, follow the road to the right which will take you up hill.



From there the path is very simple to follow, it will guide you round the hill and you will eventually meet with the first junction turn left down the hill this will lead you back to the car park. If you wish to go anti-clockwise simply follow the red signs after turning right at the V junction.

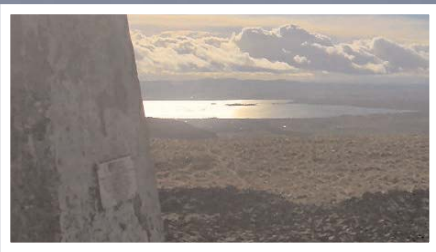
There is also an alternative path to the right from the parking area following the first red signs. This path will take you along the edge of the forest, turning left up the side of the wood to rejoin the main forest road. On clear days it is possible to see up the River Tay along towards Dundee. You'll need to turn round and look behind you though!



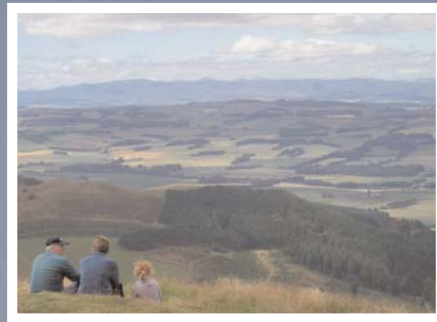
5. East and West Lomond

Pick a clear day to climb these hills and you will be rewarded with some of the most incredible panoramic views in the area! Strictly speaking these peaks are in Fife but the views are worth the detour. The Lomond Hills can be found along the A911 through the town of Leslie, in the direction of Glenrothes. Once you have passed most of the shops on your left there is a white sign on the right side of the road directing you to the Lomonds and Falkland, turn left there and follow the brown signs to the car park. The toilets are closed during the winter months, but open dawn till dusk from Easter onwards.

Parking: (NO 227 062) There is a large car park with Toilets and Picnic Benches situated between the 2 Lomonds.



Walking Directions - East Lomond: From the car park head East, cross the road and follow the obvious path up the hill. The path is very simple leading you straight to the bottom of the East Lomond hill or to a Limekiln Path (on your right). To get up the hill go through the gate and follow the path up, you have a choice between two footpaths both similar in incline and difficulty. At the top is a monument and views to the Firth of Forth.



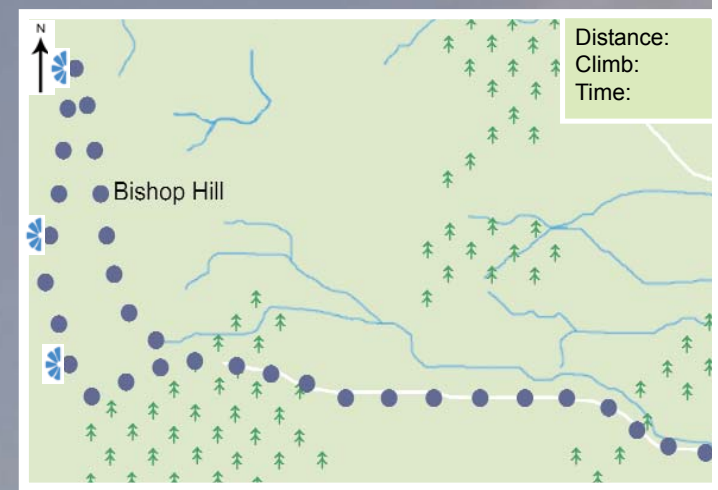
Walking Directions - West Lomond: From the car park walk away from the road and follow the track. Once through the green gate take a left up the hill and follow the pathway. At this point you can already see the hill you are going to climb on the horizon, eventually the path will become an obvious track and it carries on until you get to the bottom of the hill. Here the track breaks into 2, for a gentle incline take the wider, right track which winds up around the hill. For more of a challenge take the left footpath which leads you straight up the side of the hill to the monument.

6. Bishop Hill

This walk takes you up the gently sloping back of Bishop Hill and Leven. To get to the start of the walk take the A911 towards Leven side of the A911 towards West Balgownie beside the Holl Reservoir (Kinross) where there is a small sign for Lomond Hills Fishery.

Parking: (NO 227 033) Parking is possible both to the South and North of the hill.

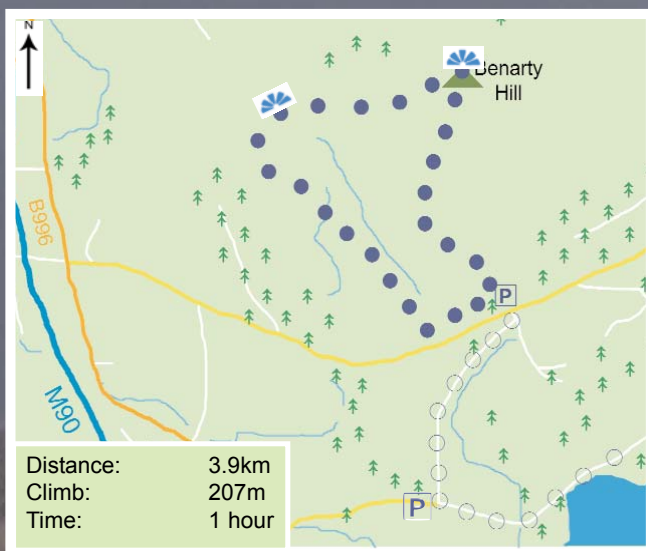
Walking Directions: Starting from the Car Parking, take the track past West Balgownie going West. Follow this track past West Feal Farm House and up through pine forests towards the summit. When the hard core road takes a sharp left turn go straight on, following the old grass covered way. This will take you to the edge of the forest where there is a gate. Go through the gate, turn to the left and follow the edge of the forest heading upwards towards the top of a hill, where you will find a small cairn.



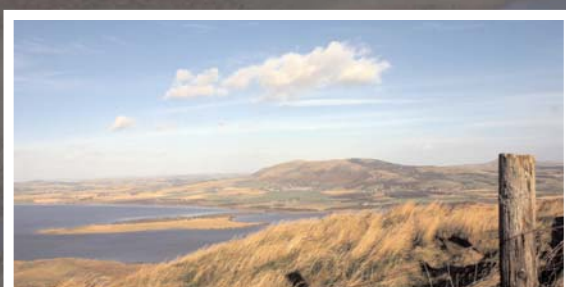
8. Benarty Hill

This is another walk which starts in Fife. However, it is another short climb which gives great views North over Loch Leven and East towards the Ochils. To get to the start follow the B996 South out of Kinross, going beyond the B9097 junction, take a small road off to the left sign posted Ballingry and Lochore.

Parking: Follow this for 3km until you reach a parking space on the left opposite a small gated track. (NT 155 968).



Walking Directions: From the parking place, follow the path and steps steadily up hill until a junction with a track is reached (there is a nice bench here for a breather or a quiet cigar!), turn left up this track and keep following the path into woods, bearing around the hill until a small fence is crossed on the edge of the wood. Follow the track in a North Westerly direction across the heather hilltop until you get to the trig point which marks the top of the hill. From this point there are excellent views across Loch Leven to the North. Leave the hill top to the South east and follow the path that goes along the ridge, this dips down into a small valley and then tracks up a steep incline to another small top, which is the site of what appears to be an iron-age hill fort. Follow this ridge to its end and then head in a South Westerly direction until you reach a small stream. Follow this stream back to the road and the car parking spaces. There is a track on the other side of the road which leads down into the paths at Lochore Meadows, where there is a cafe and toilets. An option to start here (where there is plenty parking) would provide a longer version of this walk.

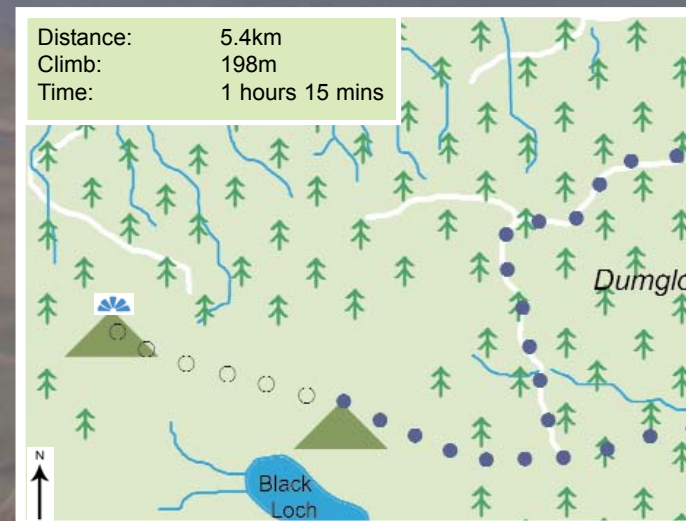


9. Dumglo

This is a short walk uphill with great rewards in views over Kinross. The trail can be found on the B9097 between the M90 and Crook of Leven, taking that you will soon find a cyclists sign. To the left you will wind slowly up a single track road with Nivingston. Follow the trail with parking possible on the left hand side of the road.

Parking: (NT 093 971) There is space for a couple of cars on the left hand side of the road.

Walking Directions: This trail starts on a well defined forest path straight up from the parking, proceed along the path for roughly 800m then take the left fork up hill to a turning circle. Following the path which is on the right of the turning circle and skirts the edge of the wood, you will reach the summit of Dumglo. There is an option to cross the short distance to the next peak or return to the turning circle where the grass path started. You can then return back down the forest path or go straight through the clearing down through woods, over a stream, to a fence at the bottom of another hill peak. You need to cross the barbed fence and skirt round the hill straight ahead of you. Follow the sheep trail anticlockwise around the peak and the view opens out to include Loch Leven. Continue circling the peak anticlockwise, move towards the edge of the forest.



op Hill

and gives you fantastic views to the West across Loch Leven going from Scotlandwell. There is a turning on the north side of the reservoir. It is shortly after a blind summit (coming from the East end and to the South West of the Holl Reservoir.



From the top of this hill, turn in a North West direction and follow the ridge enjoying the fine views to the West, after approximately 1.25 Km you will find the summit of the main top where there is a small cairn. Come down the small hill in a South Easterly direction and you will find a small track, which will take you back to the gate at the top of the track. Follow this back to your car.

12km
319m
2 hours 45 mins

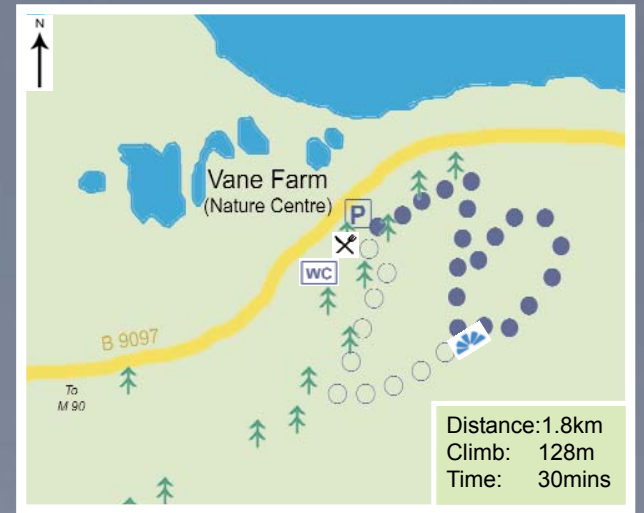


7. Vane Farm Trails

This is one of the best quick routes to a high point with great views, and the kids love it. There is the added attraction of visiting the bird hides and using the binoculars and nature kits available at the Reserve. Vane Farm is well sign posted from the M90. It can be found along the B9097. The B9097 (signed to Scotlandwell and Glenrothes) is accessible from the B996 south of Kinross or via the A911 and B920 from Glenrothes.

Parking: These walks are situated within Vane Farm Nature Reserve which has its own car park (NT 159 990). There is a charge for entry to the Reserve which includes the trails for non RSPB members.

Walking Directions: The start of the Vane Farm Hill Trails can be found once through the Reserve Shop. You can take the path to the right which meanders through a wooded area over streams and gives more and more views of Loch Leven through the trees on your left.



Distance: 1.8km
Climb: 128m
Time: 30mins

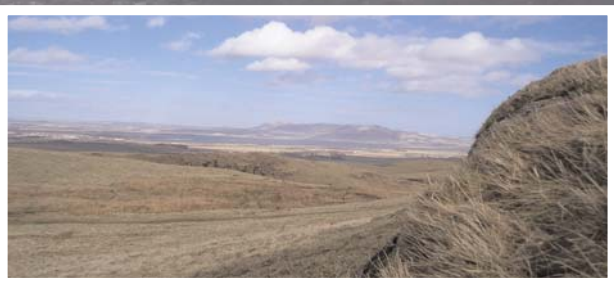
You will come to a junction where you can choose a lower, easier path (to the left) or turn right and take a steeper route which brings you to the summit. Here you will have views south over Fife towards the Forth as well as the whole of Loch Leven and west towards the Ochils. If it is clear you will also see the Perthshire hills in the distance. There are fairly steep steps back down which meet up with the lower easier path and both routes continue via paths and steps back to the Reserve building.



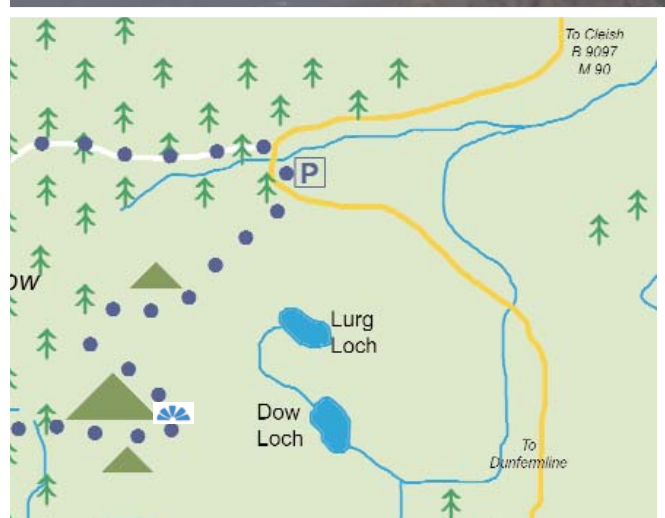
nglow

cross-shire, the Ochils, Fife and Loch Glow. The start of this walk is at the end of the motorway. Coming in from the motorway end there is a left hand turn to Townhill (7) Dunfermline (9). Take that direction to the Craggs to your left. You will find a gate on the right accessing

the side of the road at the start of the trail.



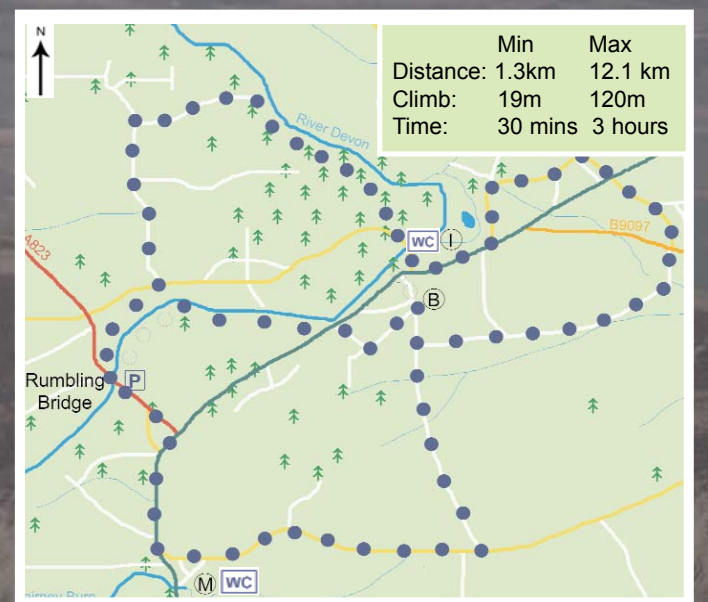
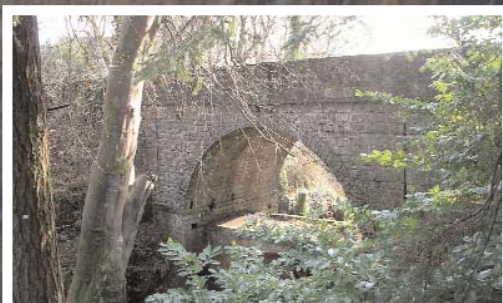
There is another peak with a cairn on it ahead of you. Keep that to your left and once over the ridge you will see the road where you have parked. Walk towards the dyke and cross it, then work your way over to the fence at the road side. There is a gate opposite a passing place, which is the easiest way to climb back onto the road to your car.



10. Rumbling Bridge

The walk around Rumbling Bridge can be lengthened or shortened depending on your mood as there are many ways around this walk. Rumbling Bridge is sign posted, you can find it along the A977 between Crook of Devon and Powmill. **Parking:** There is parking for a few cars on Rumbling Bridge itself as well as at the access near Lendrick School. It is also possible to park at Powmill or Crook of Devon and walk in to the path.

Walking Directions: The trail starts at the gate beside Rumbling bridge with a steep step. The trail follows the side of the gorge in a well defined route. You will have options once you reach the road at the top end of the gorge. You may cross the bridge and return down the opposite side of the gorge to the start. You may cross the road and follow the public path which directs you to Balruddrie. This path progresses around the grounds of Lendrick School. Follow the tarmac road until you see a large white house up to your right. You should turn right here and follow a farm track through fields. The track reaches the shores of the River Devon where you follow a path enclosed by wire on the right. This takes you along the river edge until a right turn which takes you between high wire fences. This narrow passage takes you back in to the Crook of Devon. Take a left at the end of the narrow path and follow it to the main road. Turn left along the main road past the Inn (I) and beyond the edge of the houses to the road which goes up past County Fabrics. Follow this road up past the Primary school. The road swings round to the right passing several houses before you reach open country again. Turn right down towards Drum and right again towards the main road. A quick right and left over the B9097 will take you onto a tarmac road which turns sharp right towards a rougher



	Min	Max
Distance:	1.3km	12.1 km
Climb:	19m	120m
Time:	30 mins	3 hours

road proceeding straight back along behind Crook of Devon. At the end of this straight road (B) you can turn right towards the village and then left up a road to Harelaw which will bring you back to the main A977. Crossing very carefully you can rejoin the path which works its way back to Rumbling Bridge along the river bank and back into the Gorge. You may also turn left at point (B) and proceed along the straight road which heads south. Turning right at the end of this road you will arrive on a single track road where you turn right and work your way back along to the A977. Just before you reach the end of this road you will see the Powmill (M) Milk Bar down on your left for refreshments. To return to Rumbling Bridge you need to cross the A977 very carefully and follow the path beside the main road until the left turning back into Rumbling Bridge.